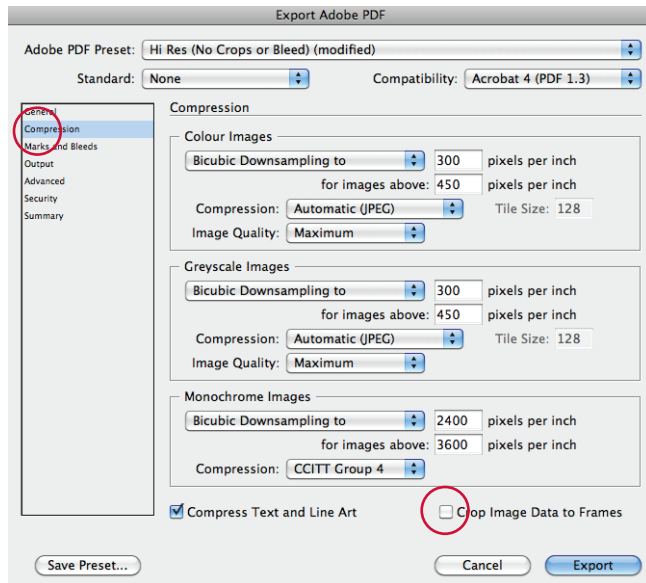


Interloopmailer® Design Instructions

When designing artwork for the interloopmailer® a few rules need to be applied:

You will have been provided/ or downloaded an Interloopmailer® template from our website - www.interloopmailer.com
The template is set-up in Adobe Illustrator; you should therefore use Adobe Illustrator to open the template and create your artwork. If you have set up your artwork using Illustrator we will need to receive either a Hi Res PDF with all fonts converted to outlines, or the original file with all images/fonts supplied or embedded. If for whatever reason you need to open the PDF template in Adobe InDesign to set-up the artwork, your PDF will need to be set-up differently. You can send the packaged InDesign file along with all links and fonts, or send a Hi Res PDF (with fonts as outlines) using the following option:

When going to the Compression setting on the right hand options list, un-tick the Crop image Data to Frames box in the bottom right hand corner of the window. This allows us to access the bleed on your images which is hidden within your picture box frames.



Please make sure all template guides/lines are visible on your artwork, as these are vital for us to align and set-up your artwork for print.

Due to the way that the interloopmailer® folds there are faces on the panels that are repeated from the previous face - these are represented in grey in the diagram (on page 2) and have the corresponding letter in them to the panel that is repeated - for example the panels **a** and **b** on both face 1 and 2 will have the same artwork in them.

It can be difficult to align artwork up if it crosses from one panel to another when the mailer is folded. To make sure that this does not happen we would advise that the artwork does not cross any of the solid lines in the diagram (on page 2). Artwork can cross the dotted lines and also may cross from the grey to white panels.

On face 2 where the red line appears, due to the way that the mailer is cut, the artwork in the panel above and the panel below should not be different colours or different pictures. Either side of the split must be the same colour or a single picture which crosses both panels. If this is not done then the colour may bleed on the opposite panel. If your design requires you to use two different colour panels or images, it can be done as the edges of these two panels meet until the interloopmailer® is turned.

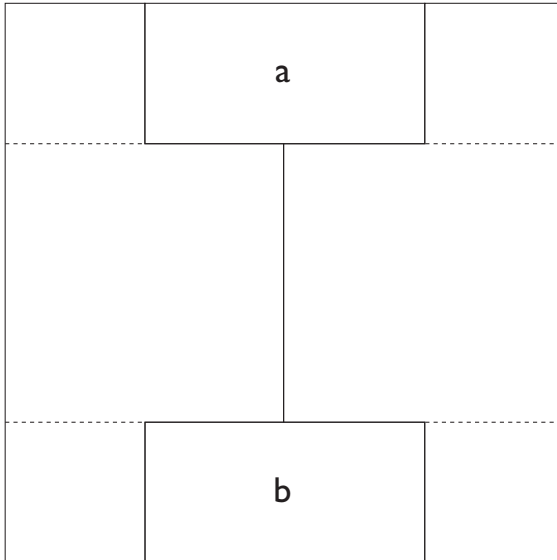
On Face 3 due to the way that the mailer is cut and folded the top of panel **e** and the bottom of panel **f** where the red line appears when printed are printed next to each other. Because of this the top panel and the bottom panel CANNOT be different colours or different pictures, both top and bottom panels must be the same colour (This can also be achieved with a thin band of colour which appears either side of the split). If this is not done then the colour may bleed on to the opposite panel.

So that we can keep colour consistency please can you supply pantone references for solid colours that are used on multiple panels. If pantone colours are not included in your quote, we will just use the 4 colour CMYK breakdown used within your artwork.

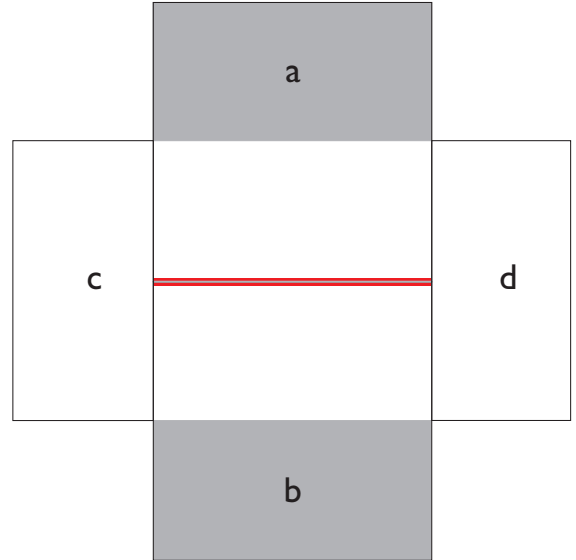
If you require assistance with any of the above instructions please contact us on 01270 625130

Please see the next 2 pages for your diagram/guide and an interloopmailer® example.

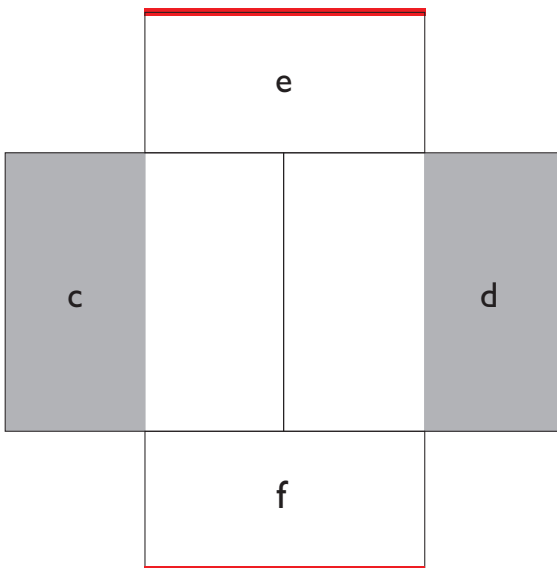
Face 1



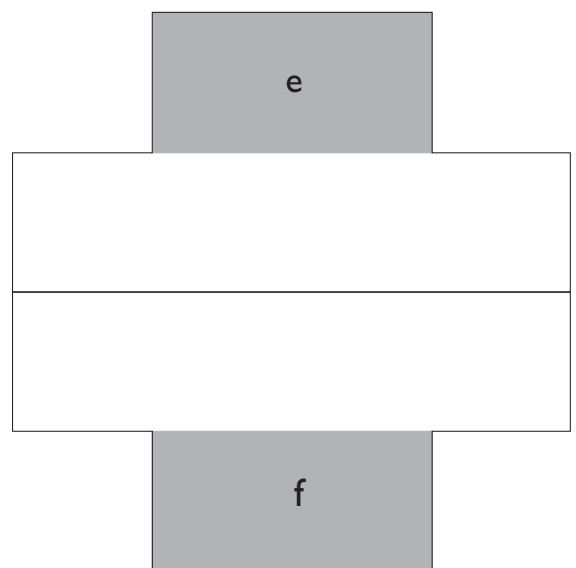
Face 2



Face 3



Face 4



Prestigo

Control everything
with one remote.



PHILIPS
sense and simplicity

One-touch activation of all your equipment

When you want to watch a movie, listen to music, do you first have to switch on and adjust an apparently endless list of equipment? The Prestigo controls all your audio-visual equipment with the press of just one single button. Simply create dedicated settings for your favorite activities and the Prestigo will know exactly what to switch on, and which settings to adjust.

PHILIPS
sense and simplicity

Control over every function

The Prestigo can control virtually every function on every audio and visual system available today, whatever the brand. And if it can't do exactly what you want, it can learn how from your original remote! Simply press the button that controls a particular function, and the Prestigo will intercept the infrared code it needs to activate and adjust it. This also means it will not only be able to control the equipment you own today, but also whatever you buy in the future.

PHILIPS
sense and simplicity

Color channel icons

The Prestigo lets you zap to the channel of your choice immediately – simply touch the logo of your favorite channel that is displayed on the control's large touch screen. You can create a 'favorites list' by selecting logos from the large library. If a logo you want is missing you can download it from Philips' online database of over 10,000 logos.

A simple layout

Universal remotes are supposed to simplify things, but often, the sheer number of buttons can make it almost impossible to find the function you're looking for. The Prestigo, however, only has the buttons that you regularly use – such as 'volume', 'channel'. You can control all of the other functions using its large touch screen. The largest screen on the market, and because it's full color, navigating its straightforward menu is as easy as can be.

PHILIPS
sense and simplicity